

| REV | MODIFICATION | DATE       | DRAW  | APPROVE |
|-----|--------------|------------|-------|---------|
| A   | NEW DWG      | 2007.07.04 | HUANG | KEVIN   |
|     |              |            |       |         |
|     |              |            |       |         |

NOTES

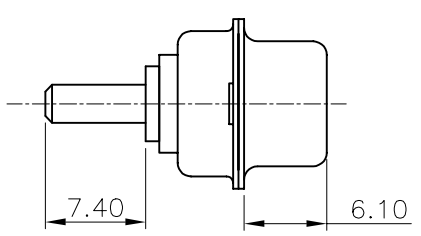
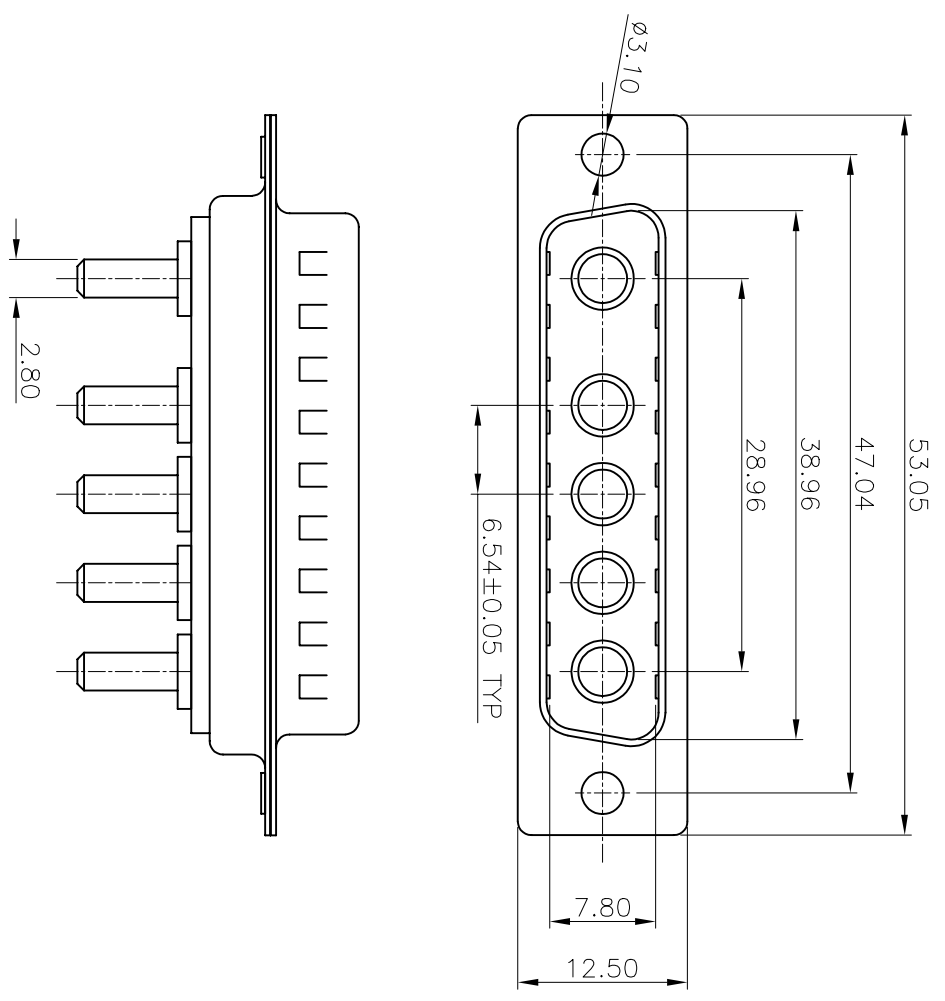
1: MATERIAL:  
SHELL: STEEL  
HOUSING: PBT+30%G.F, BLACK, UL94V-0  
CONTACT: BRASS

2: FINISH:

SHELL: NICKEL PLATING  
CONTACT PLATING: GOLD PLATING

3: SPECIFICATION:

CURRENT RATING: 40A  
VOLTAGE RATING: 300V  
CONTACT RESISTANCE: 10m $\Omega$   
WITHSTANDING VOLTAGE: AC 1000V 5s  
INSULATION RESISTANCE: 5000M $\Omega$  500V DC  
OPERATING TEMPERATURE: -55°C~105°C



-TOLERANCES-  
UNLESS OTHERWISE SPECIFIED

|             |       |                  |       |      |                            |      |      |      |
|-------------|-------|------------------|-------|------|----------------------------|------|------|------|
| X.X         | ±0.30 | X.X°             | ±3°   |      | TITLE: SW5 MALE 插板成品       |      |      |      |
| X.XX        | ±0.15 | X.XX°            | ±1°   |      |                            |      |      |      |
| X.XXX       | ±0.10 | X.XXX°           | ±0.5° |      | PRODUCT NO: 133-005MBXMK01 |      |      |      |
| APPD: KEVIN |       | CHECK: TENA      |       | DATE | SCALE                      | UNIT | TYPE | PAGE |
| DRAW: HUANG |       | DATE: 2007.07.04 |       | FRBE | MM                         | Y    | 1/1  |      |